

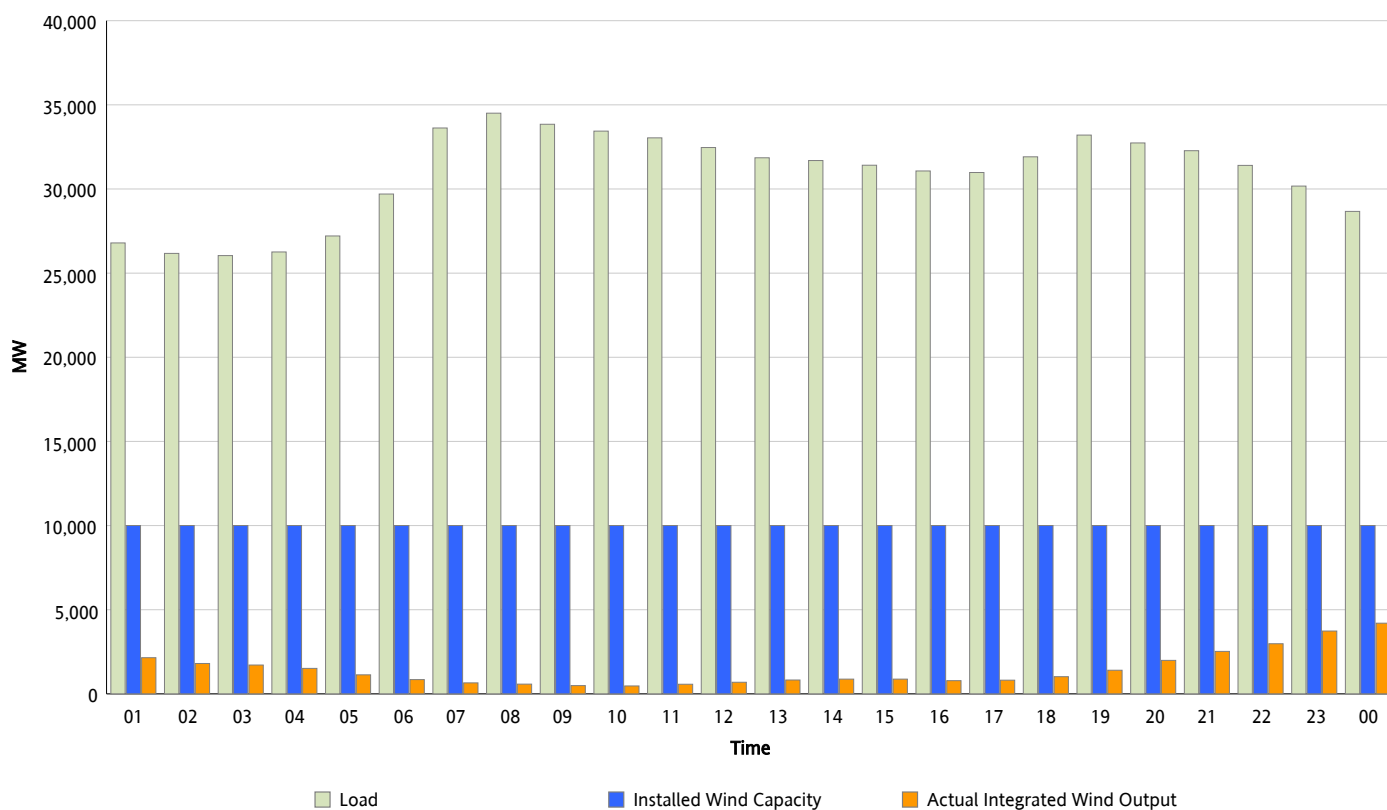


ERCOT Grid Operations

Wind Integration Report : 11/16/2012

Peak Load	34,502 MW
Load Peak Hour (HE)	08
Wind Over Peak	579 MW
Wind Record 11/10/12	8,521 MW
Max Wind Value*	4,313 MW
Wind Peak Time	23:59
Wind Integration %	15.42 %

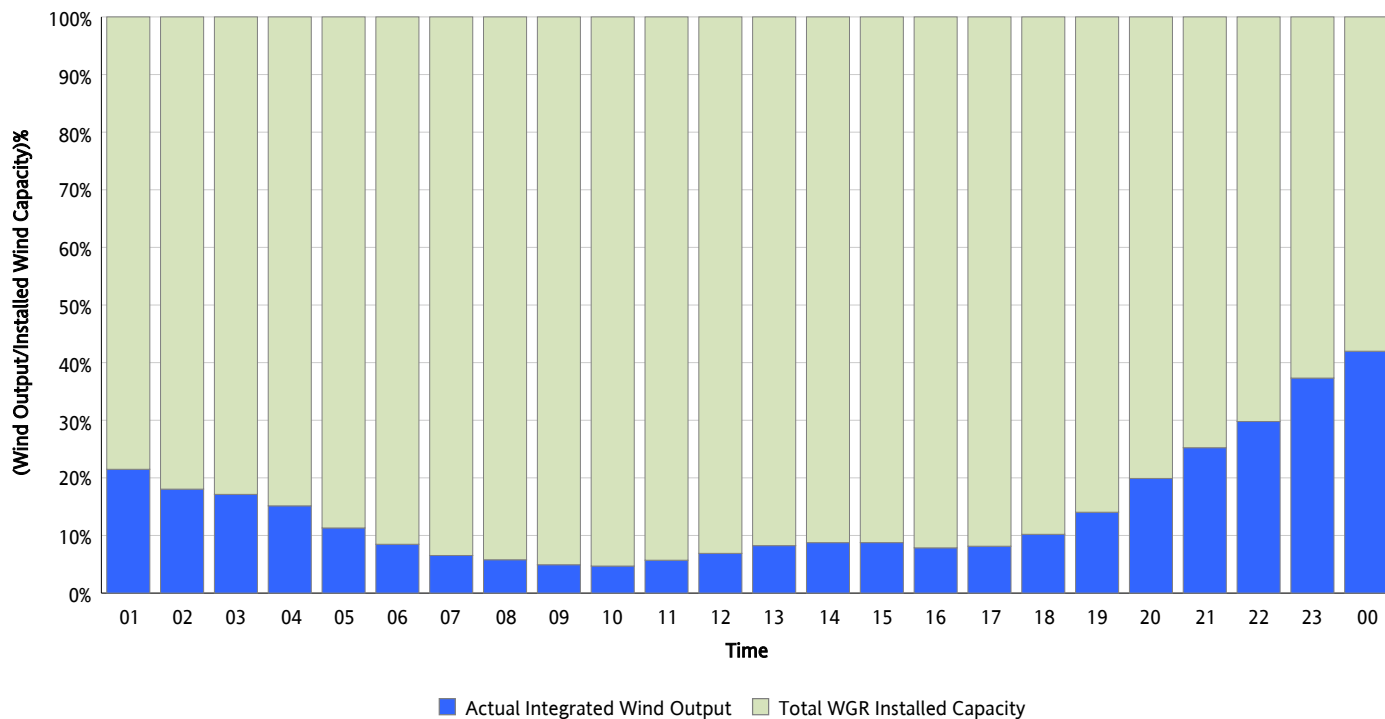
Hourly Average Actual Load vs. Actual Wind Output
11/16/2012



* Wind Record and Wind Max represent instantaneous values and the rest of the values are integrated over the hour

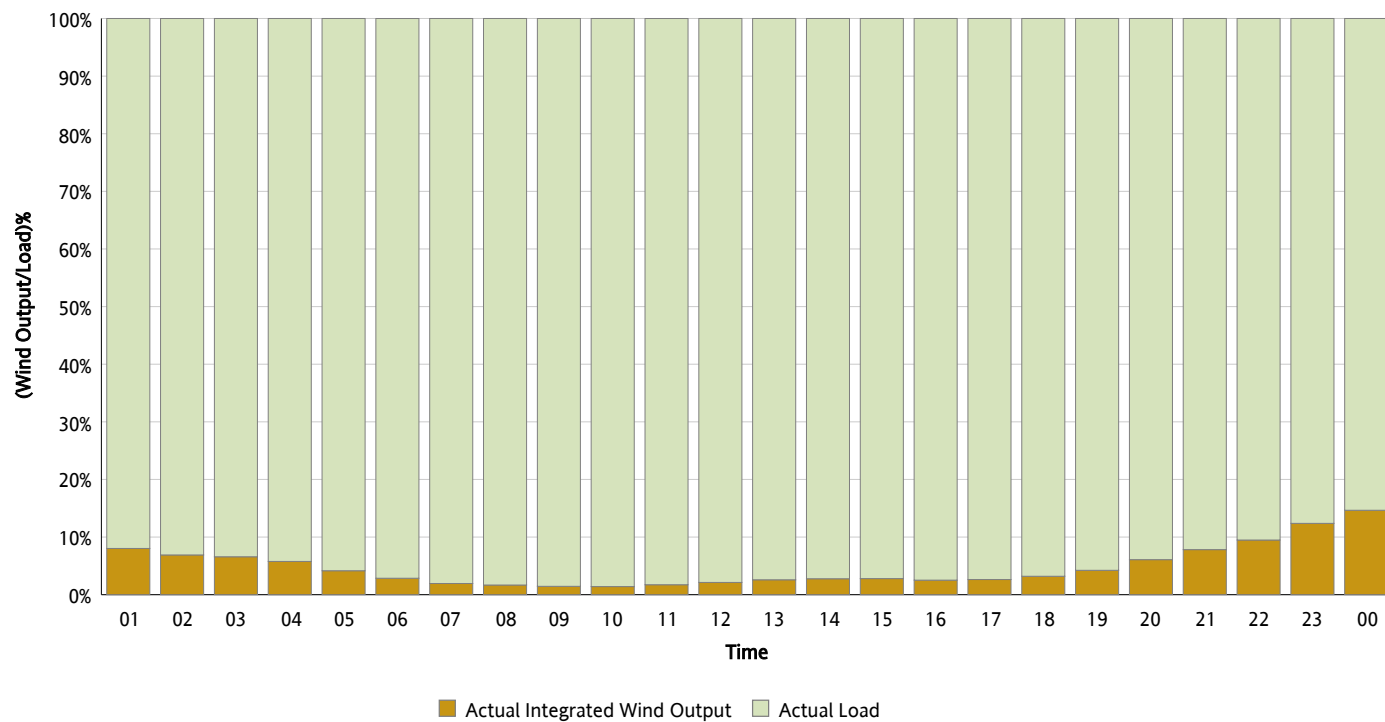
Actual Wind Output as a Percentage of the Total Installed Wind Capacity

11/16/2012



Actual Wind Output as a Percentage of the ERCOT Load

11/16/2012



ERCOT Load vs. Actual Wind Output

11/09/2012 - 11/16/2012

